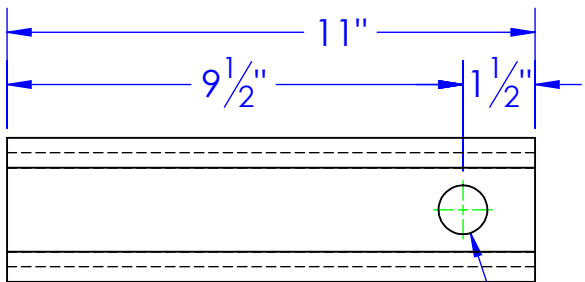
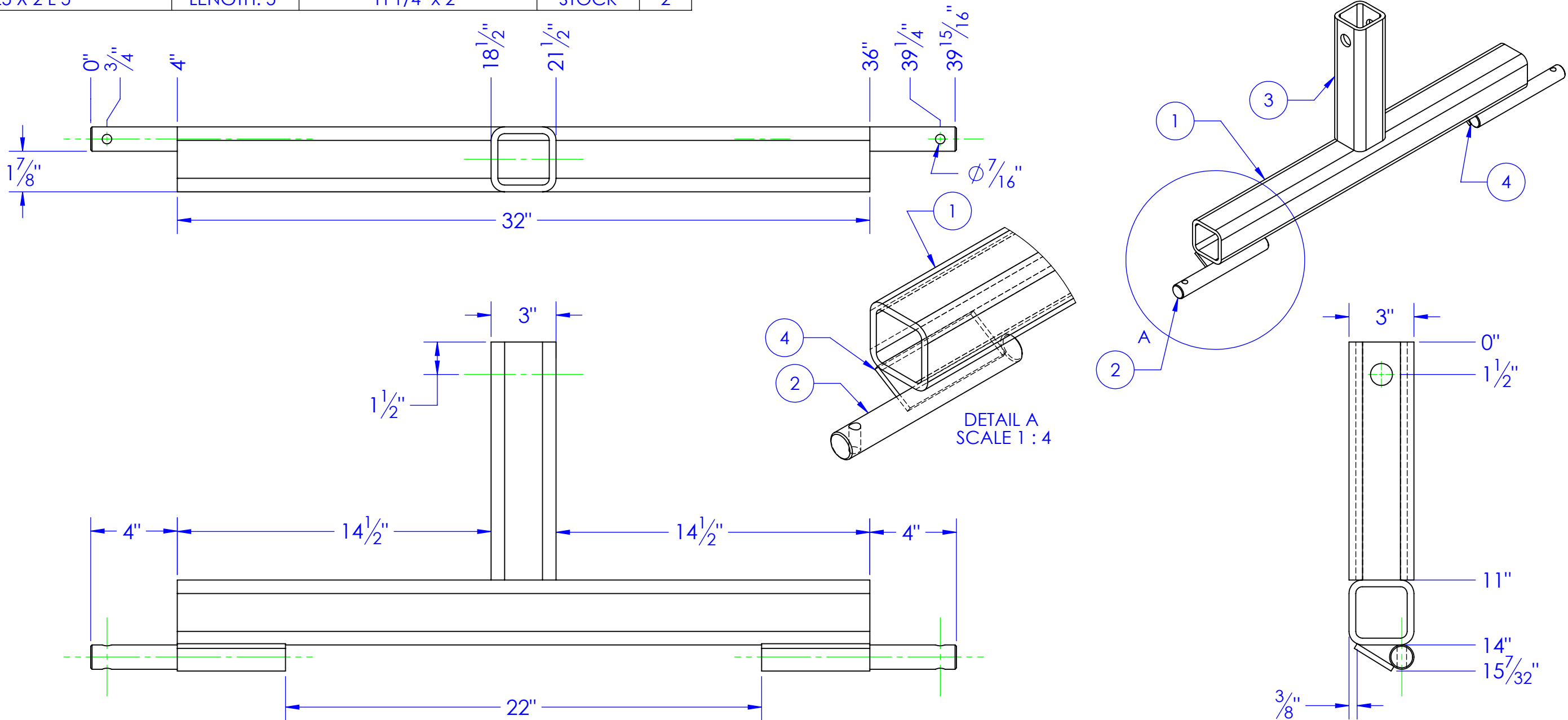
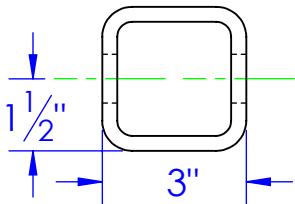


ITEM NO.	PART NUMBER	DESCRIPTION	MATERIAL	DRAWING #	QTY.
1	ST 3 x .3125 L 32	LENGTH: 32"	ST 3 x 3 x 5/16	STOCK	1
2	STC-CR 1.125x4142 L 9	LENGTH:9"	CF ANN 4142 1-1/8 RDx 12	60-1109	2
3	ST 3 x .3125 L 11	LENGTH: 11"	ST 3 x 3 x 5/16	60-1109	1
4	FI .25 X 2 L 5	LENGTH: 5"	FI 1/4" x 2"	STOCK	2

REVISIONS			
REV.	DESCRIPTION	DATE	APPROVED
A	UPDATED TO NEW STANDARD DRAWING FROM TPF2-2	1/8/2013	



3  
ST 3 x .3125 L 11  
LENGTH: 11"



PROPRIETARY AND CONFIDENTIAL  
THE INFORMATION CONTAINED IN THIS  
DRAWING IS THE SOLE PROPERTY OF  
<INSERT COMPANY NAME HERE>. ANY  
REPRODUCTION IN PART OR AS A WHOLE  
WITHOUT THE WRITTEN PERMISSION OF  
<INSERT COMPANY NAME HERE> IS  
PROHIBITED.

UNLESS OTHERWISE SPECIFIED:  
DIMENSIONS ARE IN INCHES  
TOLERANCES:  
FRACTIONAL  $\pm 1/16$   
ANGULAR: MACH  $\pm 1$  BEND  $\pm$   
TWO PLACE DECIMAL  $\pm 0.10$   
THREE PLACE DECIMAL  $\pm 0.05$   
MATERIAL  
DO NOT SCALE DRAWING

	NAME	DATE	P.O. BOX 248, SABETHA KS. 66534 (785) 284-3674 FAX (785) 284-3931			
DRAWN	HEATH	1/21/2013	<div>TRIPLE C</div> <div>INC.</div>			
PART #						
ASM #	FP-TPF2-2					
COMMENTS:			SIZE DWG. NO. REV			
3 POINT LOWER ARM ASSEMBLY, PHD			B 60-1109		A	
			SCALE: 1:5		WEIGHT: 44.16	SHEET 1 OF 1